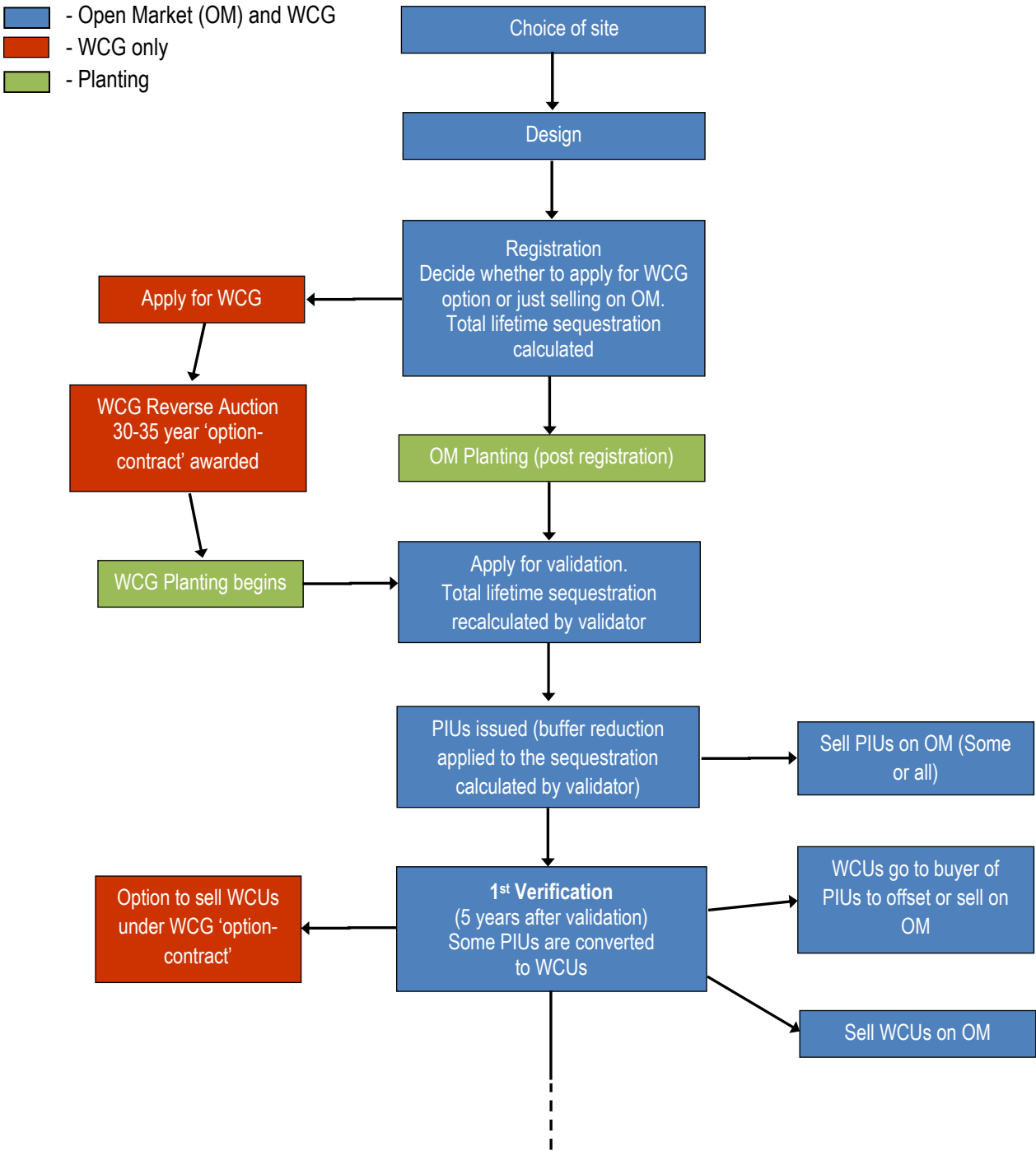
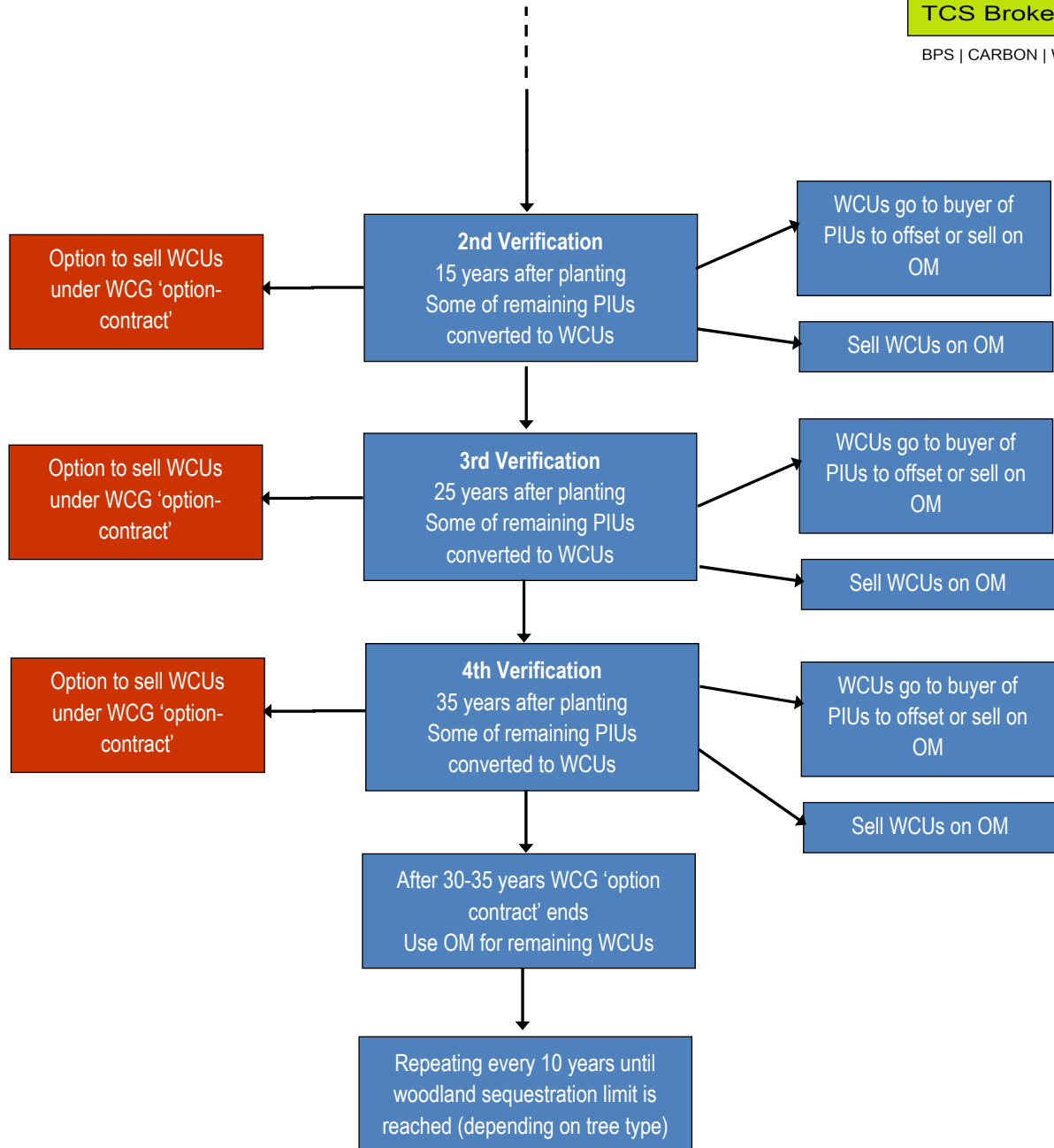


FACT SHEET 4
Woodland Carbon - Pre-planting Options





This flowchart is for illustration purposes only and professional advice in detail will be needed before relying on this information. Published 28.9.20. Contact Mark Burton on 01392 823935 or email carbon@townsendcharteredurveyors.co.uk

If you are thinking of selling Pending Issuance Units or Carbon Units, whether under the Woodland Carbon code, Peatland Code, upcoming Soil Carbon code or even through a private sector measurement system, we advise you to first consider the likely future requirement for your business to become carbon neutral. You may in future require carbon offsets for your own use, and may make a net loss if you sell the carbon sequestered on your own holding only to buy further offsets from elsewhere.